

**AccellosOne Fulfill
Warehouse Edition****TIGHTEN CONTROL**

- AccellosOne provides you with the tools to maintain better inventory accuracy minimizing writedowns and writeoffs. To insure compliance with your customers labeling requirements. Improve your control in these and many more key areas of your business

MAXIMIZE EFFICIENCY

- Leverage our advanced processes to improve your picking and receiving functions. To eliminate manual order checking. These are just a few areas where AccellosOne helps your team gain efficiency and effectiveness.

IMPROVE VISIBILITY

- AccellosOne's web-centric design gives you the ability to allow internal and external users visibility into the status of warehouse operations. Providing visibility creates competitive differentiation for your business that drives ROI.

AccellosOne Fulfill

Putting Automation to Work

Empowering The Warehouse

A recent Aberdeen Research study shows that improving the speed and accuracy of the fulfillment process and reducing the cost of labor are the key issues that businesses like yours face in the warehouse.

To gain control over these issues requires technology that optimizes the utilization of your people and your assets. More than an automated data collection system that simply extends the paper processes leveraged from within your ERP solution.

With the economic conditions that we face, you have to be looking for the system to do more so that you can leverage your workforce more effectively. So that you can maximize service levels while minimizing inventory. Find ways to optimize your transportation costs in this time of rising fuel costs and driver scarcity.

Accomplish this while not increasing your IT infrastructure!

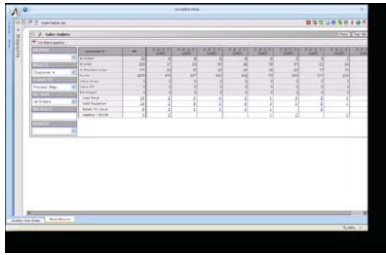
Accellos can help. We've built our Fulfill Edition to empower you to automate your warehouse using tools like conveyers, carousels, sophisticated picking algorithms, advance replenishment methods and order allocation. Delivered in a simple, intuitive solution that can be implemented quickly and efficiently.

Rich Functionality

AccellosOne Fulfill includes all of the features on Manage plus:

- Directed putaway
- Advanced allocation
- Advance replenishment
- Advanced serials/lots
- End of line workflow
- Returns

AccellosOne Collect Warehouse Edition



CONTACT US AT:

90 S. Cascade Suite 1200
 Colorado Springs, CO 80903
 Phone: (719) 433-7000
 Fax: (719) 433-7039
www.accellos.com



Broad Extensibility

Fulfill offers optional modules designed to meet the needs of even the most challenging warehouse:

- Order consolidation
- License plates
- Repackaging
- Advance receiving
- Warehouse automation
- Cartonization

Seamless Integration

Fulfill has been designed using a services-based integration framework that makes it simple to communicate with your:

- Leading ERP system
- UPS/FedEx/DHL/USPS system
- RFID labels and portals

719-433-7000

info@accellos.com

www.accellos.com

ABOUT ACCELLOS

Accellos is a global provider of software solutions specifically designed for the unique needs of logistics service providers and small and mid-sized businesses (SMB). Over 3,000 companies trust Accellos to be the technology backbone of their global supply chains. Accellos provides solutions for warehouse management systems (WMS), third party logistics (3PL), fleet management, transportation management systems (TMS), trading partner integration (EDI), automated barcode data collection, parcel shipping, transportation optimization and supply chain business intelligence. Accellos solutions are built on the AccellosOne platform, a modern technology platform featuring a user-friendly interface and simplified technical administration. For more information, email info@accellos.com or visit www.accellos.com.